

K862 *SELF PROPELLED READY KNUCKLEBOOM LOADER*



PERFORMANCE BENCHMARK.

The industry leading hydraulic system paired with pilot controlled joysticks and superior swing torque are the back bone of the K862 for strong and smooth operation. New, simplified, hose routings and cold oil bypass valve maximize hydraulic system component reliability.



PRODUCT VERSATILITY.

The K862 features many larger components including boom and stick cylinders, swing motor, and implement pump. Combined with strengthened structures and a standard counterweight, the K862 delivers the performance needed for high production jobs and large timber.



ENGINE SIMPLIFICATION.

Stage 5 Cat® engines provide a simplified engine arrangement by reducing engine Electronic Control Modules (ECMs) from 3 to 1, new direct drive fan, and increased horse power for peak performance. Low Diesel Exhaust Fluid (DEF) consumption lowers overall operating costs.



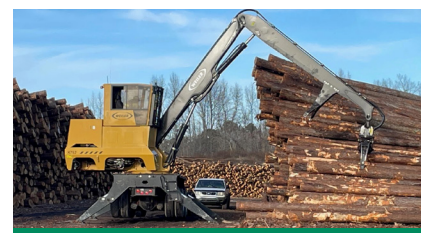
EASE OF OPERATION.

The Weiler control system uses the standard joysticks for stick steering and propel functionality paired with an additional foot pedal propel feature that allows the boom and stick to be used while traveling. A creep mode allows the carrier to operate at a low speed while in a high gear.



IN-HOUSE INSTALLATION.

Weiler factory installation of the self propelled ready knuckleboom loader onto customer or dealer supplied carrier allows for full integration with the loader controls and factory testing to ensure maximum quality and functionality.



LINE OF SITE.

The fixed cab riser option raises the overall height perspective of the operator. This gives the operator better visibility when stacking high piles, loading or off loading trucks, or loading out rail cars. The riser can be manually folded over if transporting the loader off of a mill yard or other site.



K862 SPECIFICATIONS

ENGINE MODEL	Cat® C7.1 Stage 5	MAXIMUM REACH	32' 6"	9.90 m	SWING TORQUE	73,800 lbf-ft 100 kN-m
GROSS POWER	202 hp 151 kW	WEIGHT	36,500 lb 16 556 kg	SWING SPEED	9.5 rpm	
ENGINE SPEED	1800 rpm	TRANSPORT WIDTH	8' 6"	2.57 m	HYDRAULIC OIL TANK CAPACITY	50.0 gal 189 L
FUEL CAPACITY	100 gal 379 L	TRANSPORT HEIGHT	13' 3"	4.04 m	COUNTERWEIGHT	1,440 lb 653 kg
DEF CAPACITY	4.2 gal 16 L	TRANSPORT LENGTH	52' 1"	15.88 m		

Base configuration includes standard loader hydraulics, single V heel, 5055TW grapple, and standard boom and stick. All transportation dimensions are of a carrier mounted loader.

POWERTRAIN

Cat® C7.1 engine certified to EPA Stage 5
Primary and secondary fuel filters, including water separator
Electric fuel priming and transfer pump
2-Stage engine air cleaner
Oversized cooling system
Engine driven cooling fan
Engine auto idle down

OPERATOR ENVIRONMENT

Enclosed cab with swing out front window guard meeting SAE J2267
Dual pilot joystick control with foot pedal swing
Reverse slope tinted windshield and skylight with sunshade
Two cup holders
High capacity HVAC system
Air suspension high back seat
AM/FM/Bluetooth Radio
24V to 12V converter and 2 x 12V power port
Windshield wiper
Independent stabilizer controls
Integrated carrier controls with foot propel pedal
Weiler programming system
Adjustable operator controls

HYDRAULICS

Excavator style "negacon" pump control system
Variable displacement pumps
High performance, multi-functioning main control valve
Spin-on filters
Mechanical cold oil bypass
In-line return
Electric hydraulic oil fill pump

ELECTRICAL

100 ampere alternator
24-volt electrical system with 2 12-volt batteries
Main disconnect switch with Diesel Exhaust Fluid (DEF) purge indicator light
6 LED working lights & 1 engine compartment service light
4 circuit electric swivel

SALES AND SERVICE

Sold and serviced exclusively through Weiler Forestry dealers worldwide.

OTHER STANDARD EQUIPMENT

Extreme-duty delimbing boom and stick
Heavy-duty, extended length center mount sub-frame
Bolt-on counterweight
Flat top sub-frame deck with bolt-on skid resistant fenders
Bolt-on sub-frame ladder
12" (305 mm) grapple knuckle

OPTIONAL EQUIPMENT

Auxiliary Pump and Cooler Package
32' 6" Boom & Stick (9.9 m)
Single "V" or Double "V" heels
4548 Straight Narrow Jaw Grapple (2 Port Swivel)
4548 Tapered Wedge Jaw Grapple (2 Port Swivel)
5055 Straight Narrow Jaw Grapple (2 Port Swivel)
5055 Tapered Wedge Jaw Grapple (2 Port Swivel)
Premium Heated & Cooled Seat
30" Fold-over Cab Riser (762 mm)
CB Radio
Product Link™ (PL243 Cellular or PL631 Satellite)
Additional Ladders
Vacuum Pump
Bar Saw Slasher Hydraulics
Bar Saw Slasher Hydraulics Adapters (JIC to ORFS)
Bar Saw Slasher Hydraulics Adapters w/Shut Off Valves (JIC to ORFS)
5 LB Fire Extinguisher

WARRANTY

12 months standard. Extended warranty available.

