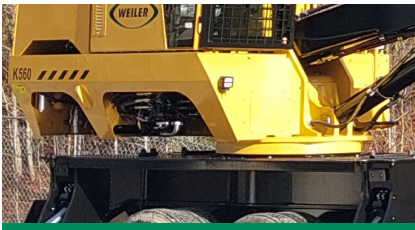


K560 *KNUCKLEBOOM LOADER*



PERFORMANCE BENCHMARK.

The hydraulic system is the industry benchmark, featuring multi-functioning capabilities and unmatched reliability. Industry leading swing torque, swing speed, swing bearing diameter and integrated structural designs deliver peak performance without compromising component life.



PRODUCT VERSATILITY.

Grapple saw ready, circle saw and live heel hydraulic options enhance machine versatility for specialized job applications without sacrificing performance. The circle saw system can also be easily switched to operate a bar saw slasher increasing the flexibility of the machine.



ENGINE SIMPLIFICATION.

Stage 5 Cat® engines provide a simplified engine arrangement by reducing engine Electronic Control Modules (ECMs) from 3 to 1, direct drive fan, and increased horse power for peak performance. Low Diesel Exhaust Fluid (DEF) consumption per fuel usage lowers overall operating costs.



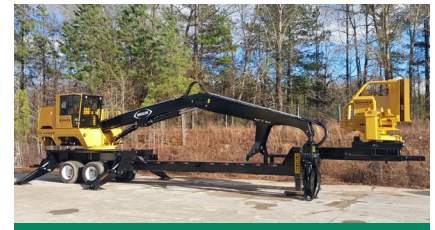
MAXIMUM OPERATOR COMFORT.

Weiler loaders feature the most window area in the market with excellent all-around visibility. The cab delivers a spacious design for even the largest of operators with plenty of leg room. A steel console provides an easy to clean surface with phone charging capabilities. Weiler control systems provide a user friendly interface.



IN-HOUSE MANUFACTURING.

95% of all fabrications for the loader, delimber and grapple are made in the LaGrange, GA facility. Combined with a locally sourced trailer, U.S. manufactured cylinders, and a local parts warehouse for quick reaction to customer needs.



UNMATCHED SUPPORT.

The industry's only factory delivered loader and work tool package. The Weiler 426A delimber and 4548 or 5055 grapples ensure one point of contact for warranty and service to keep your operation up and running.



K560 SPECIFICATIONS

ENGINE MODEL	Cat® C4.4 Stage 5	MAXIMUM REACH	32' 6"	9.90 m	SWING TORQUE	49,173lb-ft 66.9 kN-m
GROSS POWER	184 hp 137 kW	WEIGHT	34,750 lb	15 762 kg	SWING SPEED	11 rpm
ENGINE SPEED	1800 rpm	TRANSPORT WIDTH	8' 6"	2.57 m	HYDRAULIC OIL TANK CAPACITY	50.0 gal 189 L
FUEL CAPACITY	80.0 gal 303 L	TRANSPORT HEIGHT	13' 3"	4.04 m	COUNTERWEIGHT	N/A
DEF CAPACITY	3.2 gal 12 L	TRANSPORT LENGTH	52' 1"	15.88 m		

Base configuration includes standard loader hydraulics, 426A delimber, Pitts crawler suspension trailer, single V heel, 5055 TW grapple, and standard boom and stick. All transportation dimensions are of a trailer mounted loader.

POWERTRAIN

Cat® C4.4 engine certified to EPA Stage 5
Primary and secondary fuel filters, including water separator
Electric fuel priming and transfer pump
2-Stage engine air cleaner
Oversized cooling system
Engine driven cooling fan
Engine auto idle down

OPERATOR ENVIRONMENT

Enclosed cab with swing out front window guard meeting SAE J2267
Dual pilot joystick control with foot pedal swing
Reverse slope tinted windshield and skylight with sunshade
Two cup holders
High capacity HVAC system
Air suspension high back seat
AM/FM/Bluetooth Radio
24V to 12V converter and 2 x 12V power port
Windshield wiper
Independent stabilizer controls
Integrated trailer hydraulic landing gear control
Weiler programming system
Adjustable operator controls

HYDRAULICS

Excavator style "negacon" pump control system
Variable displacement pumps
High performance, multi-functioning main control valve
In-tank hydraulic return filter
Mechanical cold oil bypass
Electric hydraulic oil fill pump

ELECTRICAL

100 ampere alternator
24-volt electrical system with 2 12-volt batteries
Main disconnect switch with Diesel Exhaust Fluid (DEF) purge indicator light
6 halogen working lights & 1 engine compartment service light
4 circuit electric swivel

SALES AND SERVICE

Sold and serviced exclusively through Weiler Forestry dealers worldwide.

OTHER STANDARD EQUIPMENT

Extreme-duty delimbing boom and stick
Heavy-duty, extended length center mount sub-frame
Flat top sub-frame deck with bolt-on skid resistant fenders
Bolt-on sub-frame ladder
12" (305 mm) grapple knuckle

OPTIONAL EQUIPMENT

Circle Saw Package with Additional Cooler Package
32' 6" Boom & Stick (9.9 m)
32' 6" Live Heel Boom & Stick (9.9 m)
32' 6" Grapple Saw Ready Boom & Stick (9.9 m)
Single "V" or Double "V" Fixed Heels
50' Crawler Suspension, Hyd. Landing Gear Trailer w/426A Delimber
50' Crawler Suspension, Hyd. Landing Gear Trailer w/426A w/Front Guide
50' Crawler Suspension, Hyd. Landing Gear Trailer w/426A w/o Topping Saw
Trailer Omission
Hydraulics & Controls for 3rd Party Delimber & Trailer
4548 Straight Narrow Jaw Grapple (2 Port or 3 Port Swivel)
4548 Tapered Wedge Jaw Grapple (2 Port or 3 Port Swivel)
5055 Straight Narrow Jaw Grapple (2 Port or 3 Port Swivel)
5055 Tapered Wedge Jaw Grapple (2 Port or 3 Port Swivel)
Premium Heated & Cooled Seat
LED Work Lights
CB Radio
Weld-on Trailer Plating
Weld-on Trailer Plating w/Saw Buck Stop
Variable Speed Cooling Fan
Product Link™ (PL243 Cellular or PL631 Satellite)
Two Additional Batteries
Arctic Preheater
Additional Ladders
Vacuum Pump
Bar Saw Slasher Hydraulic Adapters (JIC to ORFS)
Bar Saw Slasher Hydraulic Adapters w/Shut Off Valves (JIC to ORFS)
5 LB Fire Extinguisher

WARRANTY

12 months standard. Extended warranty available.

