



TRACTIVE EFFORT.

Two speed hydrostatic drive provides optimal power on grade and on steep slope conditions. The dynamic braking system provides better control on slopes and reduces wear on the drive system while offering better tire life and improved ride characteristics.



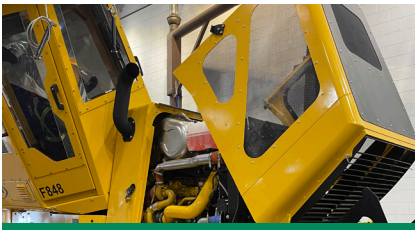
HEAVY DUTY STRUCTURES.

Designed for tough applications in North America. The center section with heavy duty cast articulation knuckle and dual tapered roller bearings offer long life and low maintenance. Thick reinforced skid plates on the underside of the machine offer maximum protection for rocky terrain.



MAXIMUM OPERATOR COMFORT.

Spacious cab maximizes operator experience with optimal visibility to the front and rear of the machine. The machine control features a user friendly touch screen fixed to the left hand arm rest and rotates with the seat. The seat can be locked in any position for comfort and versatility.



BEST IN CLASS SERVICEABILITY.

Side tilting cab and forward tilting hood provide access to all engine, hydrostatic and hydraulic components. Quick access to daily maintenance items without tilting the cab, including grouped lubrication points. An electric hydraulic oil fill pump and vacuum pump are also standard.



FAST AND POWERFUL CRANE.

The grapple and boom system are set up for fast, smooth, and powerful operation. The grapple and rotator plumbing provides maximum protection to the components and reduces downtime. The extension cylinder and grapple rotator hoses can be changed without dismantling the boom system.



FAST SMOOTH OPERATION.

Caterpillar Tier 3 C7.1 engine running at 1980 RPM offers optimum power for a smooth and fast operation of the machine. The hydraulically driven variable speed cooling fan saves on fuel and provides precise temperature control.

F848 SPECIFICATIONS

ENGINE MODEL	Cat® C7.1 Tier 3	CRANE REACH	26.3' 8.0 m	FUEL TANK CAPACITY	67 gal 254 L
GROSS POWER	275 hp 205 kW	MAXIMUM LIFT	2,998 lbs 1360 kg	GROUND CLEARANCE	27" 686 mm
ENGINE DISPLACEMENT	433 in³ 7.1 L	LIFTING TORQUE	111,975 lbf-ft 151.8 kNm	TRANSPORT WIDTH	10' 9" 3.28 m
WEIGHT	51,100 lb 23 179 kg	SLEWING TORQUE	30,240 lbf-ft 41.0 kNm	WHEELBASE	240" 6096 mm
TRACTIVE EFFORT	50,860 lbf 23 070 kgf	BUNK LENGTH	213" 5410 mm	HEIGHT	13' 8" 4.17 m
TRAVEL SPEED-LOW	4.4 mph 7.0 km/h	BUNK WIDTH-NARROW	109" 2769 mm	LENGTH	39' 3" 11.96 m
TRAVEL SPEED-HIGH	13.0 mph 20.9 km/h	BUNK WIDTH-WIDE	129" 3277 mm	PAYLOAD CAPACITY	44,000 lbs 20 000 kg

Base configuration includes 750-55-26.5 tires, rear pintle hitch and FG37 grapple.

POWERTRAIN

Cat® C7.1 engine certified to EPA Tier 3
Hydrostatic ground drive

HYDRAULICS

Load sense, pressure compensated valves
Hydraulic tank vacuum pump
Hydraulic tank electric fill pump
Hydraulically adjustable head board
Manual hydraulic cab tilt for improved engine access

ELECTRICAL

24-volt electrical system with 2 x 12-volt batteries
2 x 12V power ports
115A alternator
Weiler control and programming system
AM/FM radio w/Bluetooth
10 cab mounted LED work lights
2 boom mounted LED work lights
2 rear deck mounted LED work lights
Product Link™ Ready
Lockable ground disconnect switch

OPERATOR ENVIRONMENT

Enclosed FOPS/OPS/ROPS operator's cab
Heater / air conditioner / defroster
Tinted 1/2" (12.7 mm) polycarbonate windows
Air suspension seat with electric swivel seat lock
Touchscreen display monitor and programmable operator controls
Isolation mountings
Horn
Dome Light
Hydraulic step and access platform

OPTIONAL EQUIPMENT

Blade
Front Protection and Cab Sweeps
Seat w/ Heating and Cooling
Sun Screens
Rear Pintle Hitch
Product Link™ (PL243 Cellular or PL631 Satellite)
Ether Starting Aid
Cold Weather Coolant and Oil
Arctic Preheater
Front and Rear Windshield Wipers
Front, Sides, and Rear Windshield Wipers
Nokian 750-55-26.5 F-2 24 ply Spare Tire
Nokian 780-50-28.5 F SF 26 ply Spare Tire
Epsilon FG37 Grapple [Area = 3.87 ft² (0.36 m²)]
Epsilon FG43S Grapple [Area = 4.30 ft² (0.40 m²)]
Hultdins 360 Grapple [Area = 3.87 ft² (0.36 m²)]
Hultdins 360S Grapple [Area = 3.87 ft² (0.36 m²)]

SALES AND SERVICE

Sold and serviced exclusively through Weiler Forestry dealers worldwide.

WARRANTY

12 months standard. Extended warranty available.

