

B458A TRACK FELLER BUNCHER



POWERFUL PERFORMANCE.

Excellent multi-function capability through dedicated hydraulic pumps and optimized circuit configurations. Performance boosted by efficient travel speeds, maximum stability, and strong combination of lift capacity, swing torque, and tractive effort.



UNOBSTRUCTED GROUND CLEARANCE.

Elevated, unobstructed carbody with 35" (881 mm) of ground clearance enables unimpeded travel over rocks, stumps, and other debris. Leveling cylinders do not extend below the bottom surface of the carbody, minimizing potential interference.



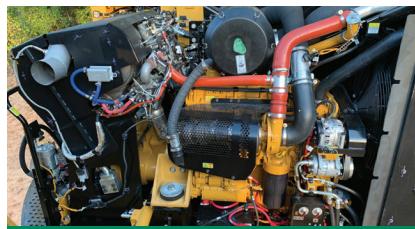
PURPOSE BUILT FOR STEEP SLOPES.

Variable gauge, eleven roller extended track frame option, provides maximum stability for steep slopes. Innovative ease-of-use features, such as the ability to reduce the frequency of foot pedal motions, improves operator efficiency.



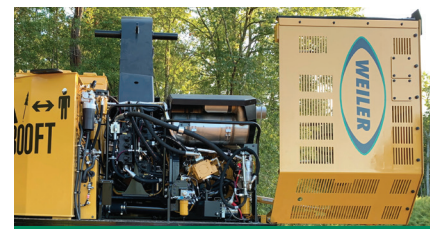
MAXIMUM OPERATOR COMFORT.

New cab maximizes operator experience through increased space, improved visibility, easier access, and options that include a heated and cooled seat, deluxe lights, and cameras. Machine controls feature an easy to use operator interface.



PROVEN RELIABILITY AND DURABILITY.

Forestry-duty cooling package and extensive validation of key common components that includes the engine, swing system, and grease-lubricated Cat® 336 HD HEX undercarriage ensure machine uptime and reduce operating costs.



EXCELLENT SERVICEABILITY.

Counterweight walkway enables machine level access to gull-wing engine enclosure that provides unmatched serviceability of components. Enclosure provides a flat area to complete preventative maintenance and service.



B458A SPECIFICATIONS

ENGINE MODEL	Cat® C9.3B Tier 4 Final	TRACTIVE EFFORT	81,229 lbf 36 845 kgf	FUEL TANK CAPACITY	216 gal 819 L
GROSS POWER	330 hp 246 kW	UNDERCARRIAGE SIZE	336 HD HEX	ENGINE OIL CAPACITY	10.6 gal 40 L
ENGINE DISPLACEMENT	568 in ³ 9.3 L	UNDERCARRIAGE PITCH	8.5" 216 mm	HYD SYSTEM CAPACITY	79.8 gal 302 L
WEIGHT (NO HEAD)	79,220 lb 35, 934 kg	GROUND CLEARANCE	35" 881 mm	TRANSPORT WIDTH	11' 11" 3.62 m
MAXIMUM FLOW	322 gpm 1220 L/min	TRACK GAUGE	114" 2883 mm	TRANSPORT HEIGHT	12' 11" 3.94 m
MAX REACH (w/CP222 SAW)	26' 10" 8.19m	TRACK LENGTH	192" 4868"	LENGTH (BOOM EXT, W/CP222)	34' 1" 10.39 m
LIFT AT MAX REACH (NO HEAD)	13,918 lb 6313 kg	LEVELING CAPABILITY	21° Forward 11° Side-to-Side	LENGTH (BOOM TUCK)	25' 7" 7.81 m

Base configuration includes standard feller buncher boom and stick and 24" (600 mm) single grouser shoes.

POWERTRAIN

Cat® C9.3B engine certified to EPA Tier 4 final / EU Stage 5
 Primary and secondary fuel filters, including water separator
 Side-by-side radiator and oil cooler
 Swing out air-to-air cooler and air conditioner condenser
 Removable debris screen
 Centrifugal engine air pre-cleaner
 Under-hood 2-stage engine air cleaner
 Variable pitch, reversing fan with guard
 Heavy-duty starter and ether aid

UNDERCARRIAGE

Three-cylinder leveling system
 Heavy-duty variable gauge track roller frames
 Grease-lubricated 336 HD HEX track
 Straddle mounted carrier rollers
 Heavy-duty bottom track rollers
 Heavy-duty recoil mechanisms
 Full length track shoe support
 Heavy-duty travel motor and swivel guards
 Towing eyes on base frame

HYDRAULICS

One hydraulic pump group for implement functions
 One hydraulic pump group for track functions
 Dedicated attachment pump for head functions
 Dedicated saw pump
 High-performance hydraulic return filters
 325 size, high torque swing drive
 Swing cushion valve and automatic swing parking brake
 Electric hydraulic oil fill pump

ELECTRICAL

115 ampere alternator
 24-volt electrical system with 2 12-volt batteries
 9 LED working lights and 2 LED service lights
 Horn and travel alarm
 Secondary engine shut off switch

SALES AND SERVICE

Sold and serviced exclusively through Weiler Forestry dealers worldwide.

OPERATOR ENVIRONMENT

Enclosed FOPS/ROPS/OPS/OR-OSHA/WCB certified cab
 Air suspension with integrated joysticks and head rest
 Left-hand tilt console
 Retractable 4-point seat belt
 Touchscreen display monitor and programmable operator controls
 Scratch resistant polycarbonate windows
 Reverse slope 1.25" (32 mm) front windshield
 Front window emergency escape
 Skylight
 Left-side fresh air window
 Pressurized cab with filtered ventilation
 Heater / air conditioner / defroster
 Radio ready with speakers
 Mount locations for CB radio and other accessories
 Behind seat storage tray
 Three cup holders, two USB sockets, and literature holder

OTHER STANDARD EQUIPMENT

Heavy-duty hood enclosure
 Heavy-duty counterweight with machine level engine enclosure access
 Heavy-duty doors, covers, and bottom guards

OPTIONAL EQUIPMENT

Standard Feller Buncher or Intermittent Saw Boom and Stick
 Intermittent Saw Boom and Stick Omission
 1.18" (30 mm) or 1.97" (50 mm) Counterweight
 Standard or Extended Roller Frames (Eleven Bottom Rollers)
 Standard or Star Carrier Rollers
 24" (600 mm) SG 336 HD HEX Track
 28" (710 mm) SG or DG 336 HD HEX Track
 Reduced Tractor Height Cab w/ Front or Rear Hinged Door
 Standard (9 LED) or Deluxe Lights (14 LED Total Lights)
 Rear Camera
 Standard Oil & Coolant, 2 Additional Batteries, or Arctic Preheater
 Product Link™ (PL243 Cellular or PL631 Satellite)
 Vacuum Pump
 CP222 Continuous Saw w/ Carbide or Steel Teeth

WARRANTY

12 months standard. Extended warranty available.

