

B457A TRACK FELLER BUNCHER



ENHANCED MACHINE EFFICIENCY.

Excellent multi-function capability through dedicated hydraulic pumps and optimized circuit configurations. Innovative ease-of-use features, such as the ability to reduce the frequency of foot pedal motions, improves operator efficiency.



POWERFUL PERFORMANCE.

Enhanced stability and travel speeds, along with a powerful combination of lift capacity, swing torque, and tractive effort provides for maximum performance, which allows machine to excel in applications from thinning to final fell.



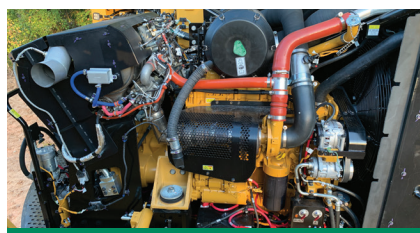
UNOBSTRUCTED GROUND CLEARANCE.

Elevated, unobstructed carbody with 33" (832 mm) of ground clearance enables unimpeded travel over rocks, stumps, and other debris. Angle between carbody and roller frames allows maximum clearance across the width of the carbody.



MAXIMUM OPERATOR COMFORT.

New cab maximizes operator experience through increased space, improved visibility, easier access, and options that include a heated and cooled seat, deluxe lights, and cameras. Machine controls feature an easy to use operator interface.



PROVEN RELIABILITY AND DURABILITY.

Forestry-duty cooling package and extensive validation of key common components that includes the engine, swing system, and grease-lubricated Cat® 336 HD HEX undercarriage ensure machine uptime and reduce operating costs.



EXCELLENT SERVICEABILITY.

Counterweight walkway enables machine level access to gull-wing engine enclosure that provides unmatched serviceability of components. Enclosure provides a flat area to complete preventative maintenance and service.



B457A SPECIFICATIONS

ENGINE MODEL	Cat® C9.3B Tier 4 Final	TRACTIVE EFFORT	68,848 lbf 31 229 kgf	FUEL TANK CAPACITY	216 gal 819 L
GROSS POWER	330 hp 246 kW	UNDERCARRIAGE SIZE	336 HD HEX	ENGINE OIL CAPACITY	10.6 gal 40 L
ENGINE DISPLACEMENT	568 in³ 9.3 L	UNDERCARRIAGE PITCH	8.5" 216 mm	HYD SYSTEM CAPACITY	79.8 gal 302 L
WEIGHT (NO HEAD)	67,020 lb 30, 400 kg	GROUND CLEARANCE	33" 832 mm	TRANSPORT WIDTH	10' 11" 3.32 m
MAXIMUM FLOW	322 gpm 1220 L/min	TRACK GAUGE	102" 2580 mm	TRANSPORT HEIGHT	11' 3" 3.32 m
MAX REACH (w/CP222 SAW)	27' 4" 8.32 m	TRACK LENGTH	192" 4868"	LENGTH (BOOM EXT, W/CP222)	34' 6" 10.51 m
LIFT AT MAX REACH (NO HEAD)	13,918 lb 6313 kg	LEVELING CAPABILITY	N/A	LENGTH (BOOM TUCK)	27' 6" 8.39 m

Base configuration includes standard feller buncher boom and stick and 24" (600 mm) single grouser shoes.

POWERTRAIN

Cat® C9.3B engine certified to EPA Tier 4 final
Primary and secondary fuel filters, including water separator
Side-by-side radiator and oil cooler
Swing out air-to-air cooler and air conditioner condenser
Removable debris screen
Centrifugal engine air pre-cleaner
Under-hood 2-stage engine air cleaner
Variable pitch, reversing fan with guard
Heavy-duty starter and ether aid

UNDERCARRIAGE

Heavy-duty track roller frames
Grease-lubricated 336 HD HEX track
Straddle mounted carrier rollers
Heavy-duty bottom track rollers
Heavy-duty recoil mechanisms
Full length track shoe support
Heavy-duty travel motor and swivel guards
Towing eyes on base frame

HYDRAULICS

One hydraulic pump group for implement functions
One hydraulic pump group for track functions
Dedicated attachment pump for head functions
Dedicated saw pump
High-performance hydraulic return filters
325 size, high torque swing drive
Swing cushion valve and automatic swing parking brake
Electric hydraulic oil fill pump
Spare hose storage area

ELECTRICAL

115 ampere alternator
24-volt electrical system with 2 12-volt batteries
9 LED working lights and 2 LED service lights
Horn and travel alarm
Secondary engine shut off switch

SALES AND SERVICE

Sold and serviced exclusively through Weiler Forestry dealers worldwide.

OPERATOR ENVIRONMENT

Enclosed FOPS/ROPS/OPS/OR-OSHA/WCB certified cab
Air suspension with integrated joysticks and head rest
Left-hand tilt console
Retractable 4-point seat belt
Touchscreen display monitor and programmable operator controls
Scratch resistant polycarbonate windows
Reverse slope 1.25" (32 mm) front windshield
Front window emergency escape
Skylight
Left-side fresh air window
Pressurized cab with filtered ventilation
Radio ready with speakers
Joystick gather arm(s) controls
Mount locations for CB radio and other accessories
Behind seat storage tray
Three cup holders, two USB sockets, and literature holder

OTHER STANDARD EQUIPMENT

Heavy-duty hood enclosure
Heavy-duty counterweight with machine level engine enclosure access
Heavy-duty doors, covers, and bottom guards

OPTIONAL EQUIPMENT

Standard Feller Buncher or Intermittent Saw Boom and Stick
Intermittent Saw Boom and Stick Omission
1.18" (30 mm) or 1.97" (50 mm) Counterweight
Standard or Star Carrier Rollers
24" (600 mm) SG 336 HD HEX Track
28" (710 mm) SG or DG 336 HD HEX Track
36" (900 mm) TG 336 HD HEX Tri-Track
Reduced Tractor Height Cab w/ Front or Rear Hinged Door
Standard (9 LED) or Deluxe Lights (14 LED Total Lights)
Rear Camera
Standard Oil & Coolant, 2 Additional Batteries, or Arctic Preheater
Product Link™ (PL243 Cellular or PL631 Satellite)
Vacuum Pump
CP222 Continuous Saw w/ Carbide or Steel Teeth

WARRANTY

12 months standard. Extended warranty available.

